

CARDIOVASCULARPPERU.COM



•
•
•

•
•

-120 +30 ()
+60 ()

...

1

*

+

- -

CARDIOVASCULARPPERU.COM

...

*

(

+

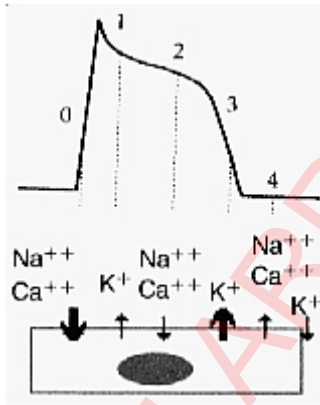
)

*

CARDIOVASCULARPPERU.COM

()

:



(" ") 0: ++

++

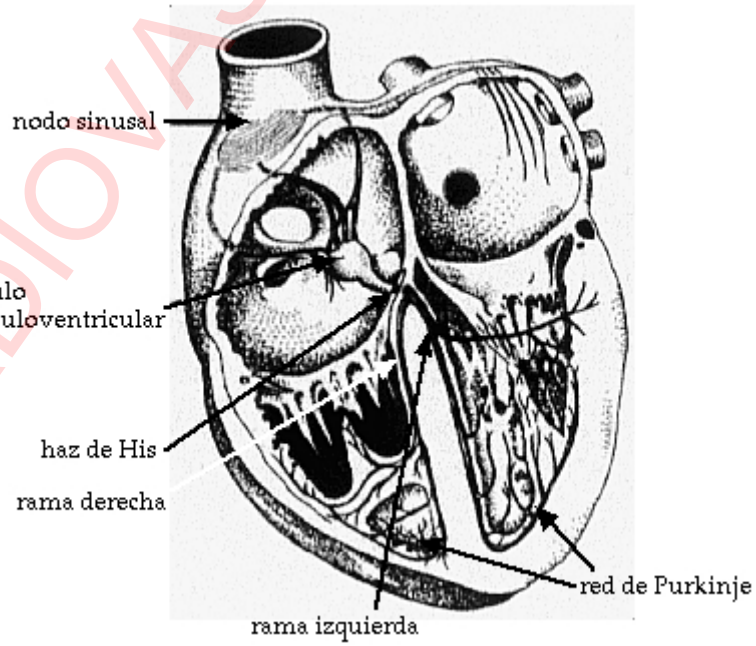
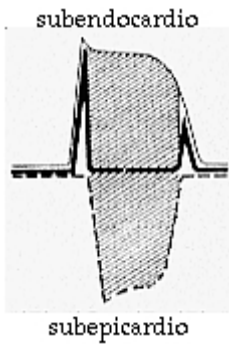
(" "):

- 1 2: ++ ++

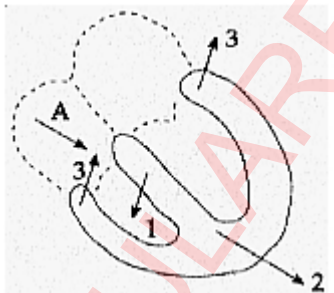
+

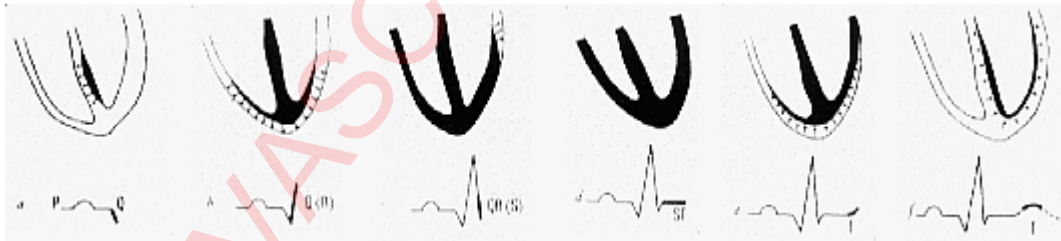
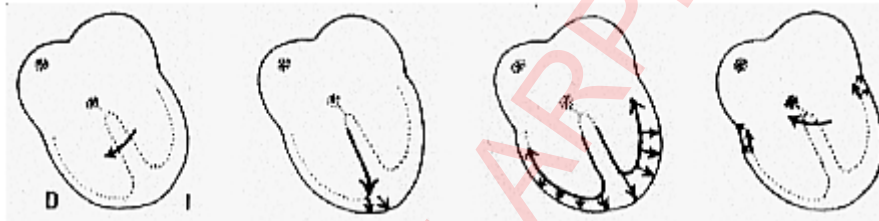
- 2 3: +

- 4:

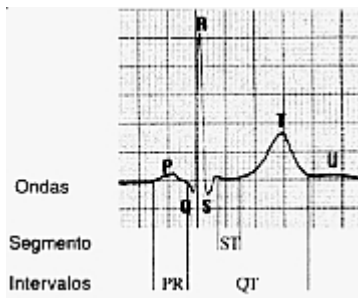


CARDIOVASCULARNURPERU.COM





,

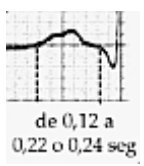


< 0.12

< 2.5



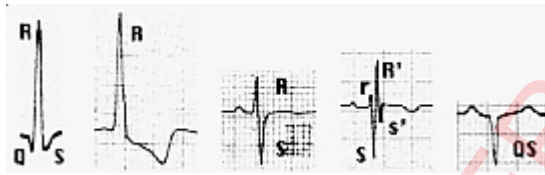
0.12 0.24



< 0.12



CARDIOVASCULARPAPERU.COM

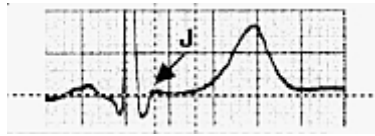


<0.045



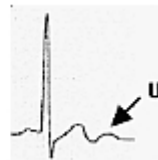
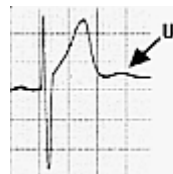
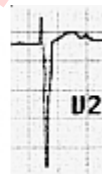
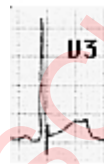
2

()



1,

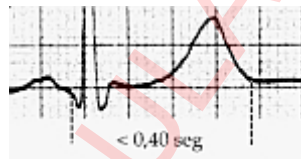
(2 4)



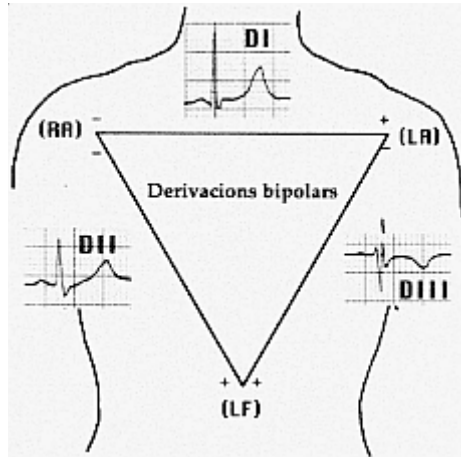
CARDIOVASCULARARPERU.COM



< 0.40



(), () () ()
 (), () ()
 ()

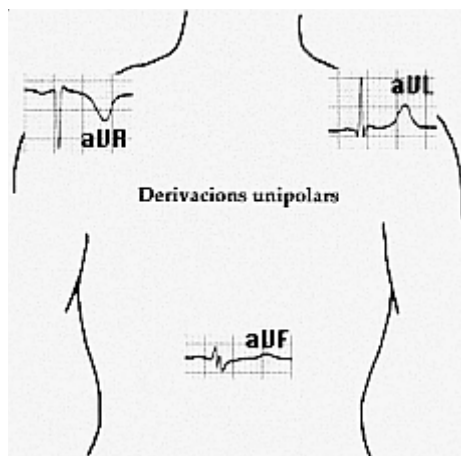


" "

" "

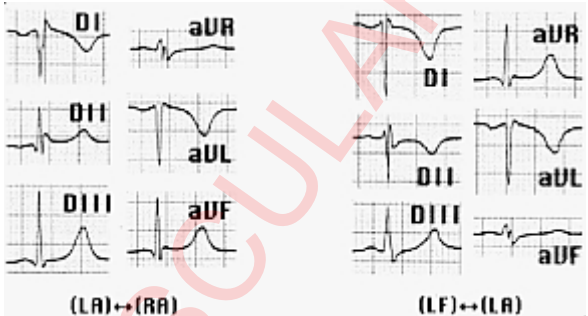
" " "

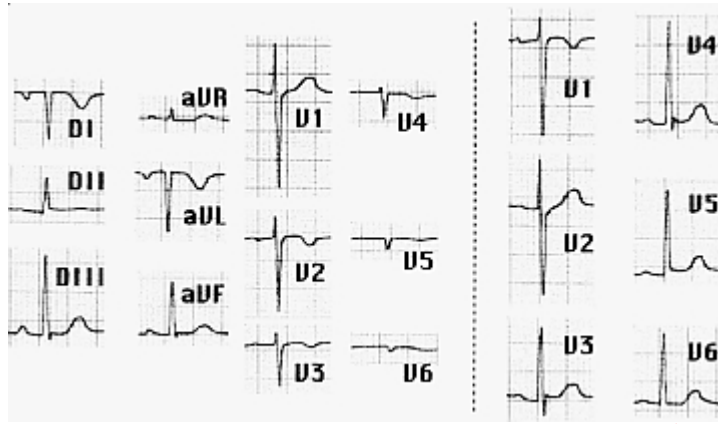
" " " " " "



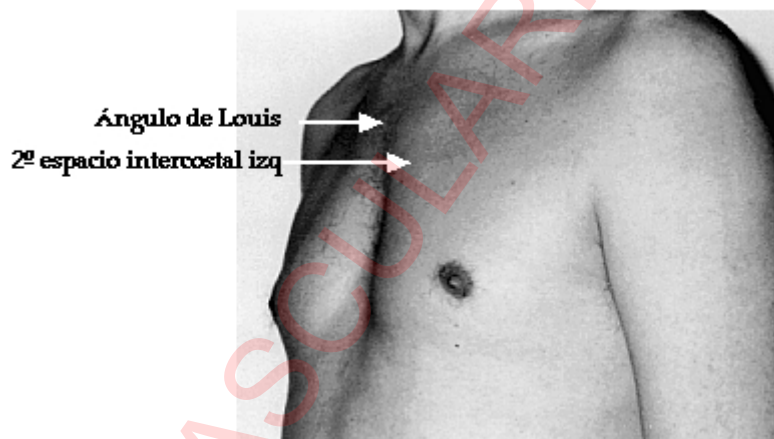
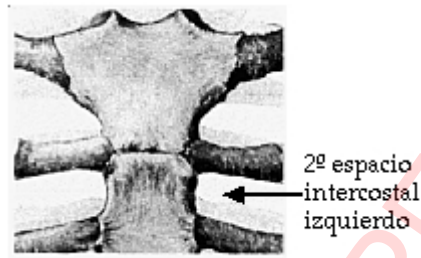
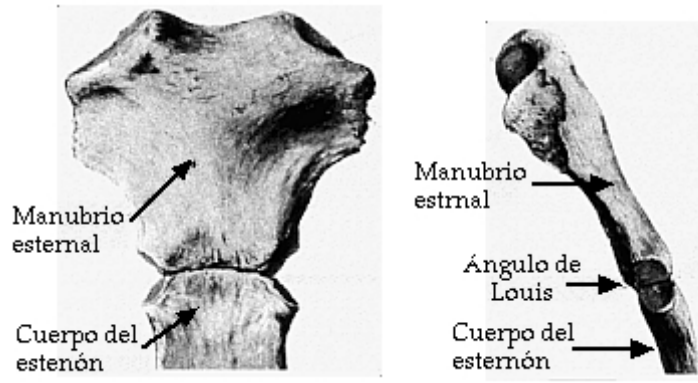
CARDIOVASCULARPAPERU.COM

).

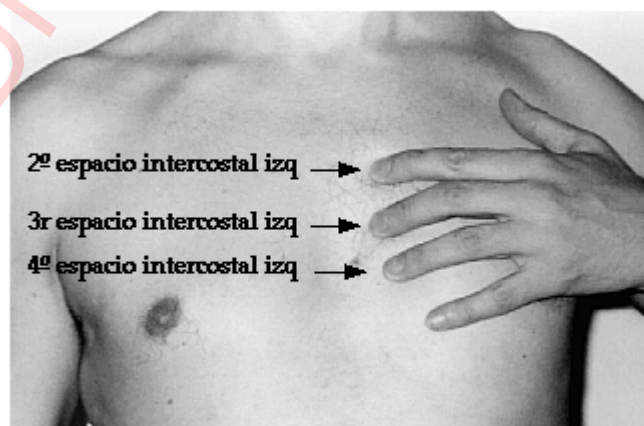




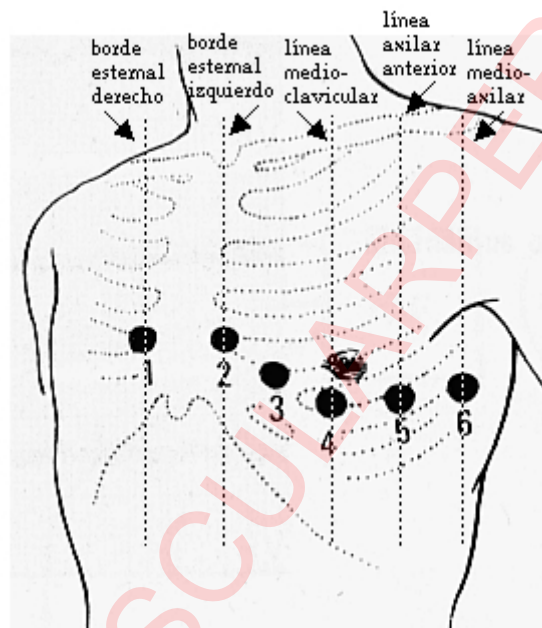
CARDIOVASCULARPERU.COM



4



4
 2, 1
 4 () 5
 4, 3
 2 4. 5
 4, 6
 4.

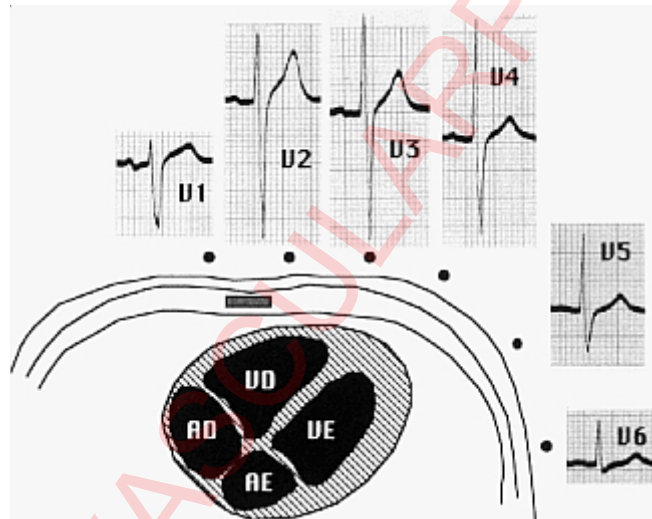


Posición de los electrodos precordiales

- V1:** 4º espacio intercostal, borde esternal derecho
- V2:** 4º espacio intercostal, borde esternal izquierdo
- V3:** punto equidistante entre V2 y V4
- V4:** 5º espacio intercostal izquierdo, línea medioclavicular
- V5:** línea axilar anterior, mismo nivel que V4
- V6:** línea medioaxilar, mismo nivel que V4

6)

(1



U1 y U2 encaran la cara derecha del tabique interventricular
U3 y U4 encaran el tabique interventricular
U5 y U6 encaran la cara izquierda del tabique interventricular

1

6,

(1 2)

(5 6).

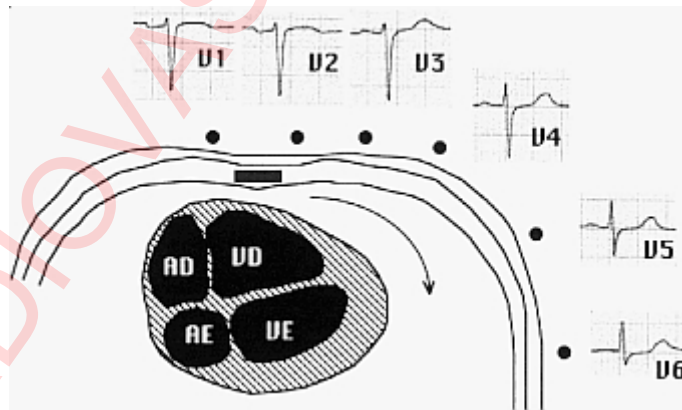
3 4.

().

().

()

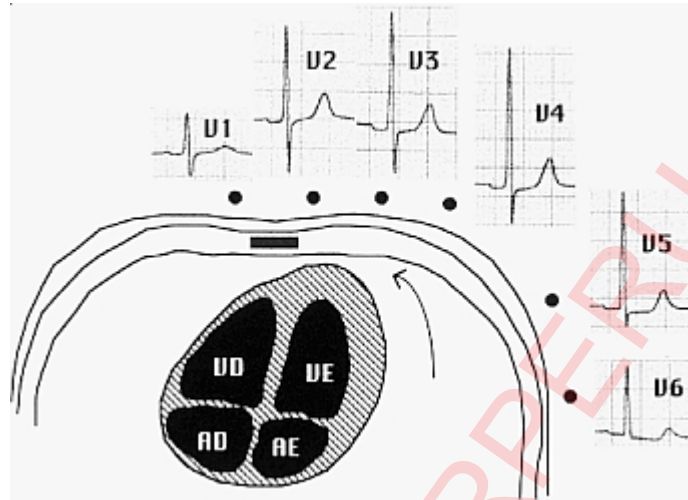
6.



)

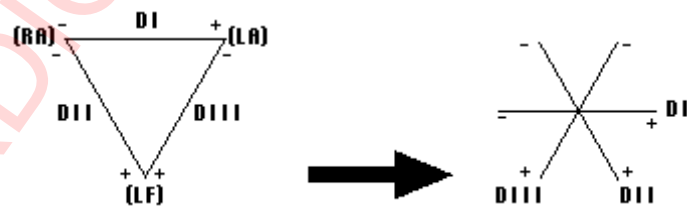
(

2.



()

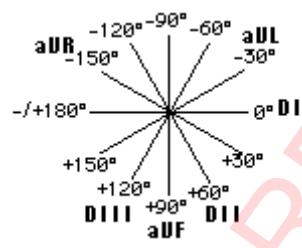
()





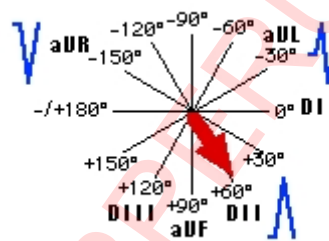
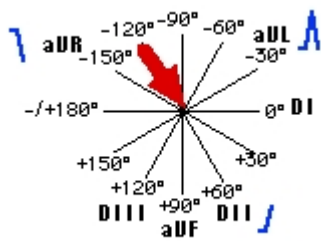
).

(



CARDIOVASCULARPERU.COM

():



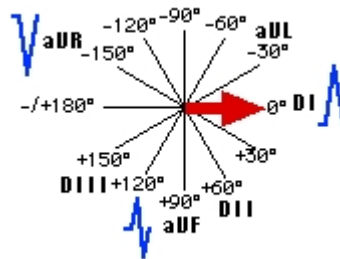
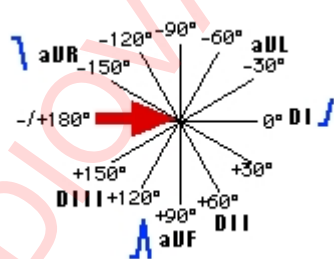
60 .

()

+60 -120 .

(

), +60 .



0 .

()

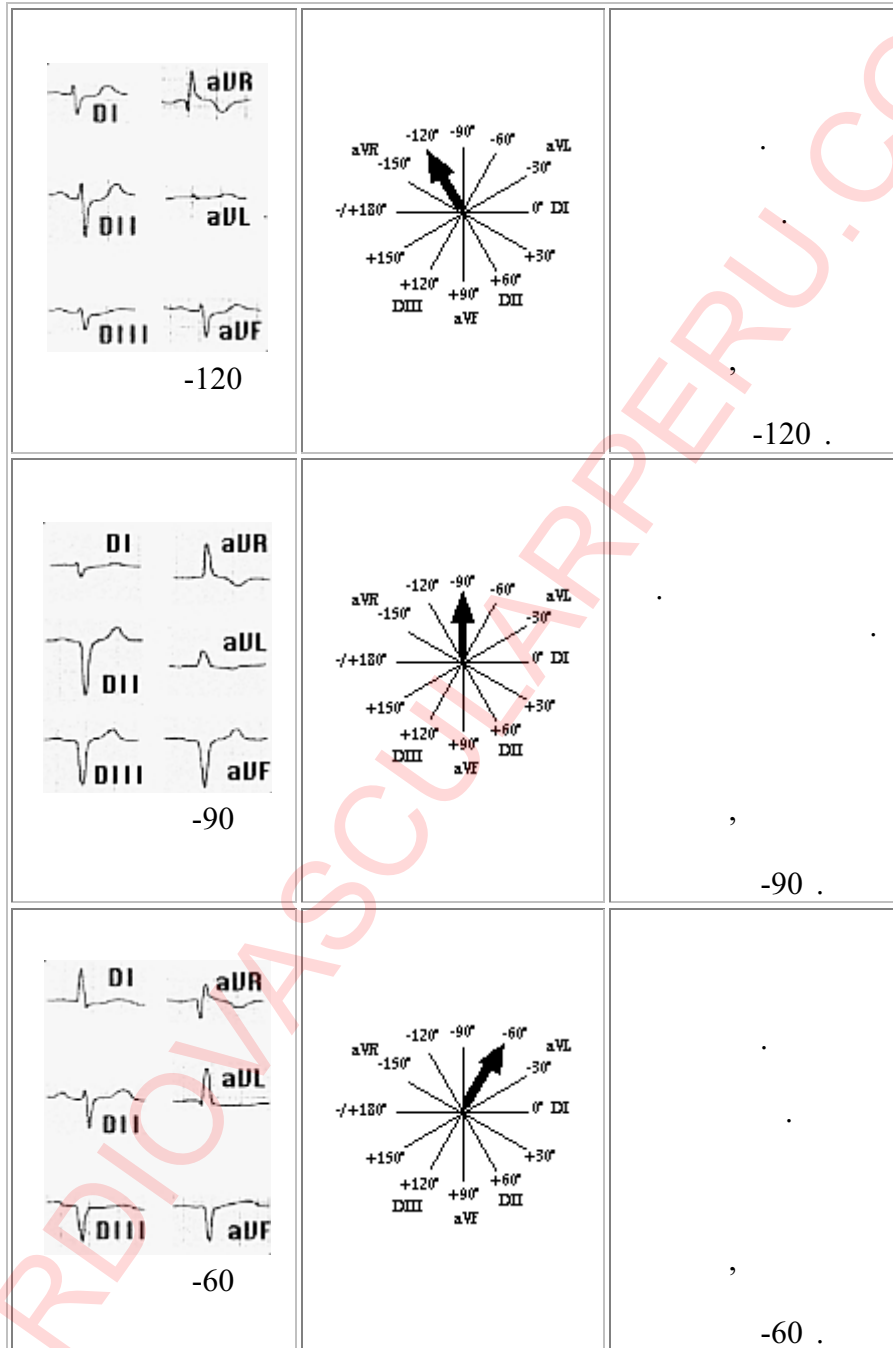
0 -/+180 .

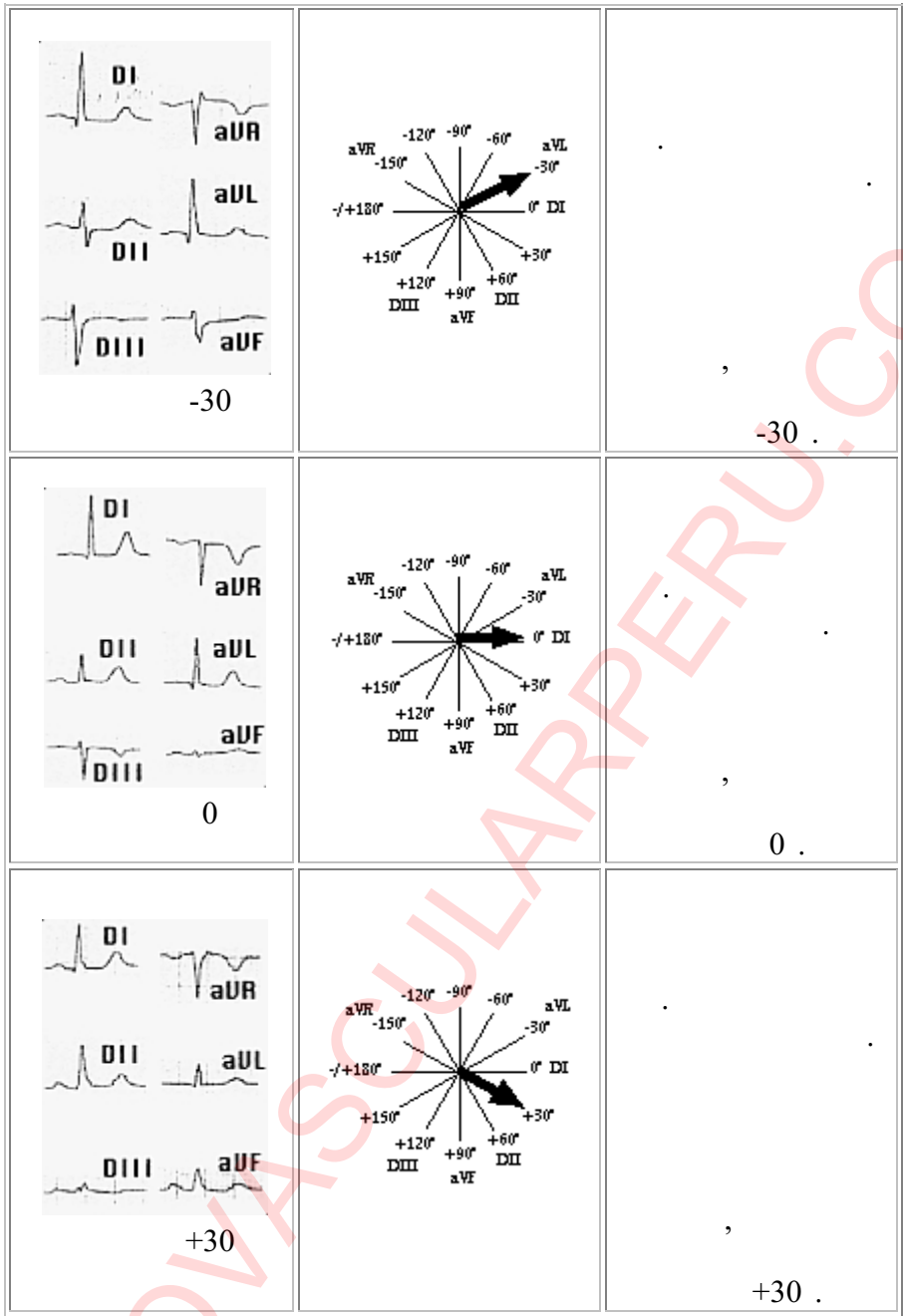
(

),

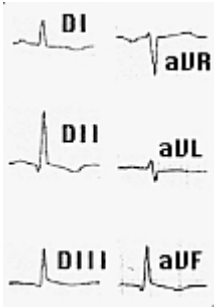
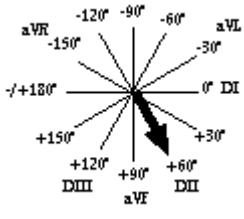
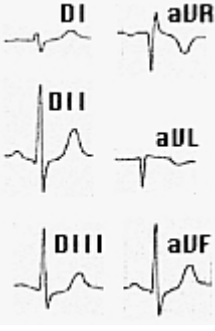
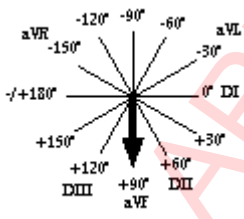

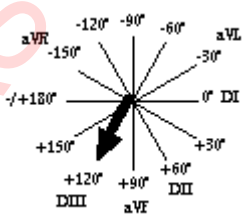
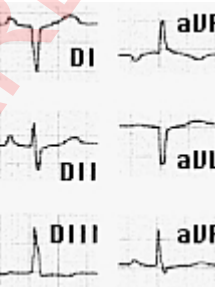
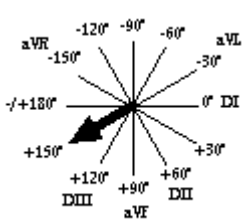
0 .

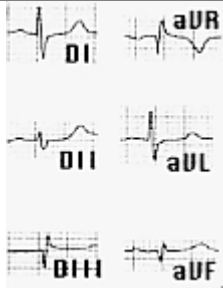
-120 +30



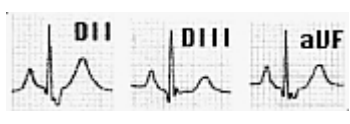
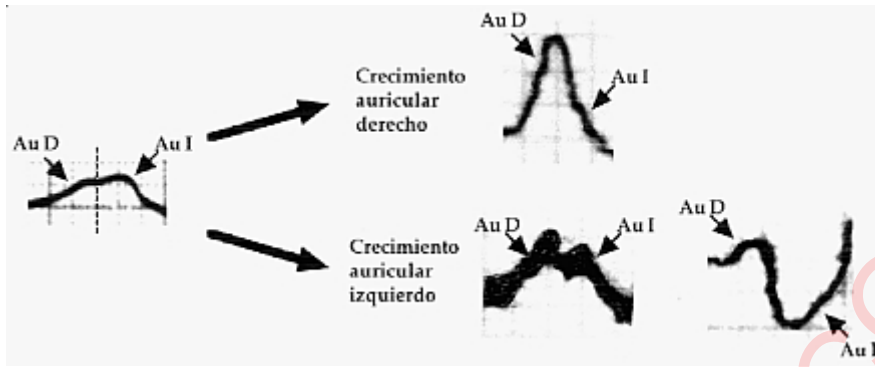


+60

 <p>+60</p>	 <p>+60</p>	
 <p>+90</p>	 <p>+90</p>	
 <p>+120</p>	 <p>+120</p>	
 <p>+150</p>	 <p>+150</p>	

		(+150 .)
		

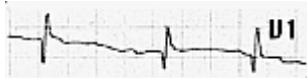
CARDIOVASCULARPERU.COM



1 2

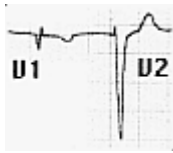


CARDIOVASCULARPERU.COM



3

6.



5

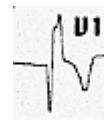
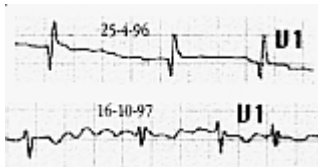
1

2.

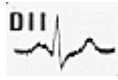
1 < 4

1

2

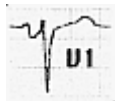


CARDIOVASCULARPPERU.COM



0.12 . (

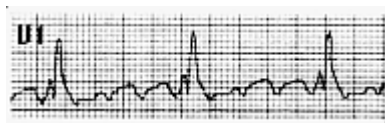
).



1

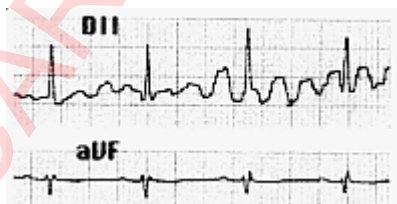
0.04 .

0.1



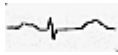
1.

...

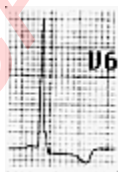
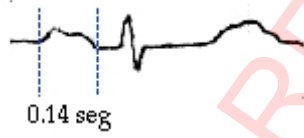


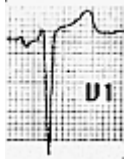
CARDIOVASCULARPERU.COM



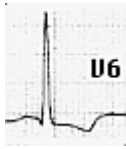
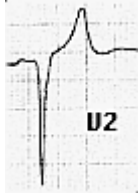


0.12





1 2



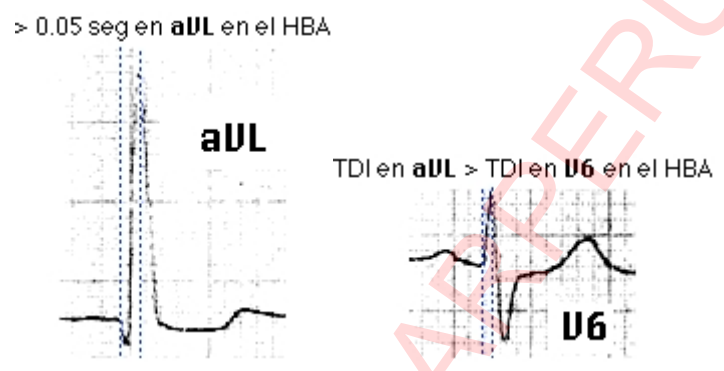
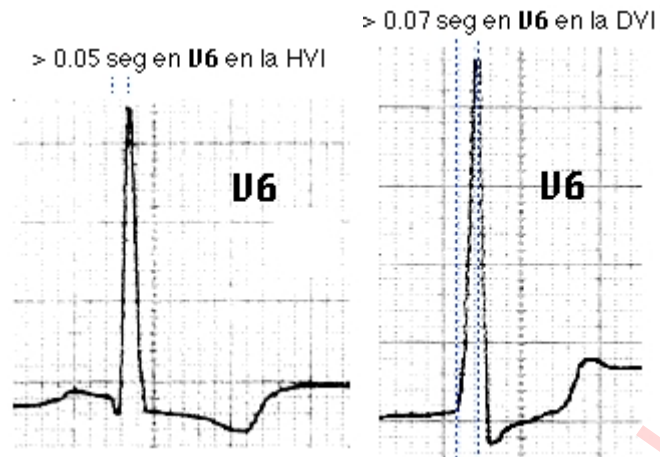
5 6

0.05



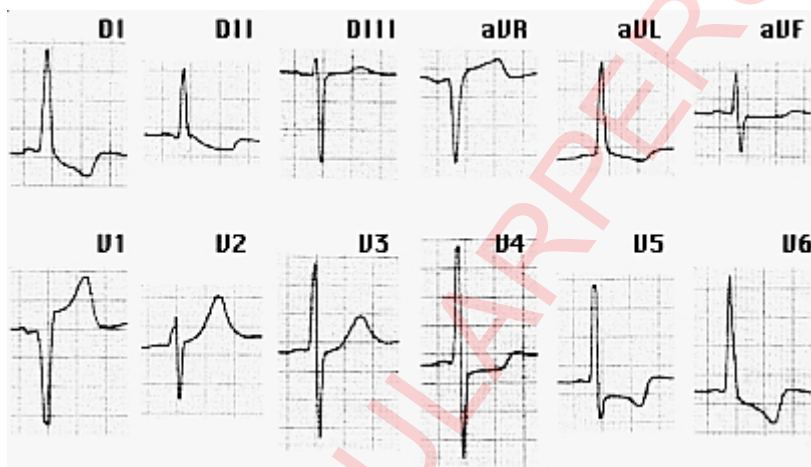
()

CARDIOVASCULARPERU.COM

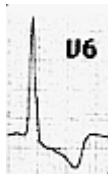
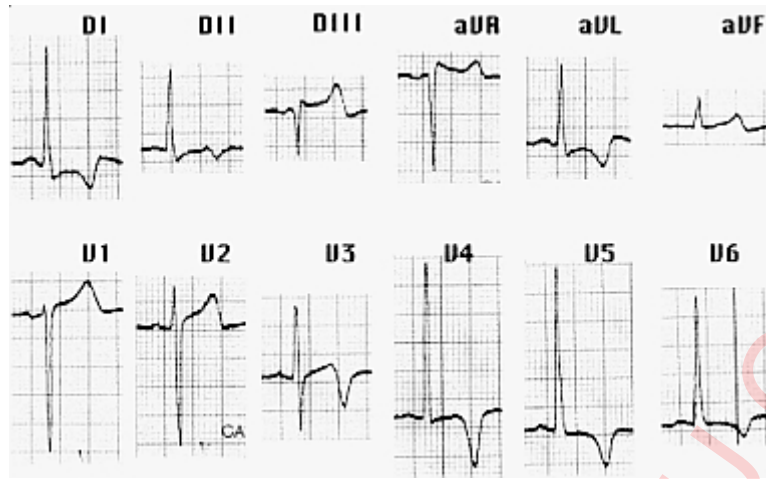


CARDIOVASCULARPERU.COM

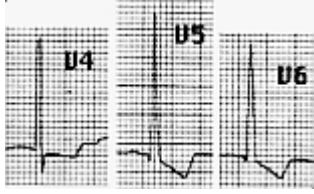
+ 2.5 ; 1.2 ; 2
 ; 1 2.4 ; 5 6 2.6 ; 5 6+
 1 3.5 .



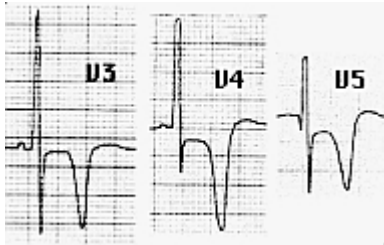
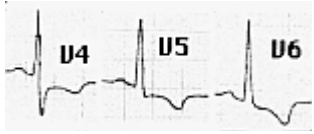
1 2 3.0 5 6 3.0 3 2.0
 1 2
 3 -30
 2
 0.09 ()
 5 6 0.05 1
 4 5



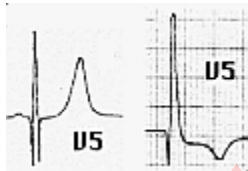
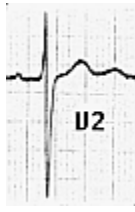
CARDIOVASCULARPERU.COM



6 3
4

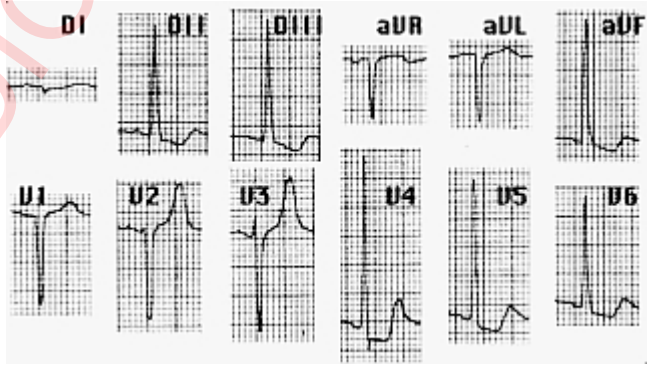


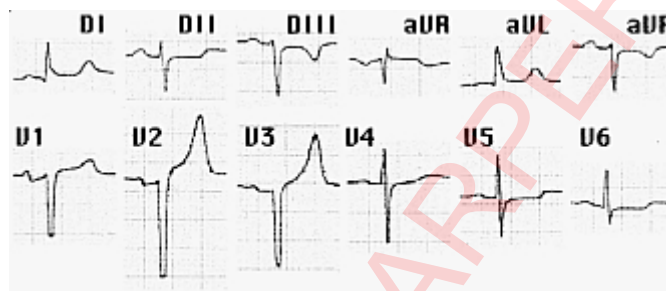
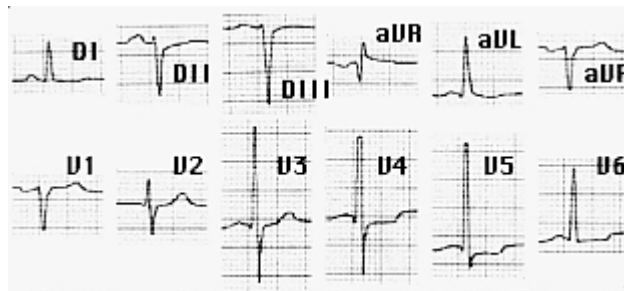
CARDIOVASCULARPPERU.COM



CARDIOVASCULARPPERU.COM

CARDIOVASCULARPERU.COM





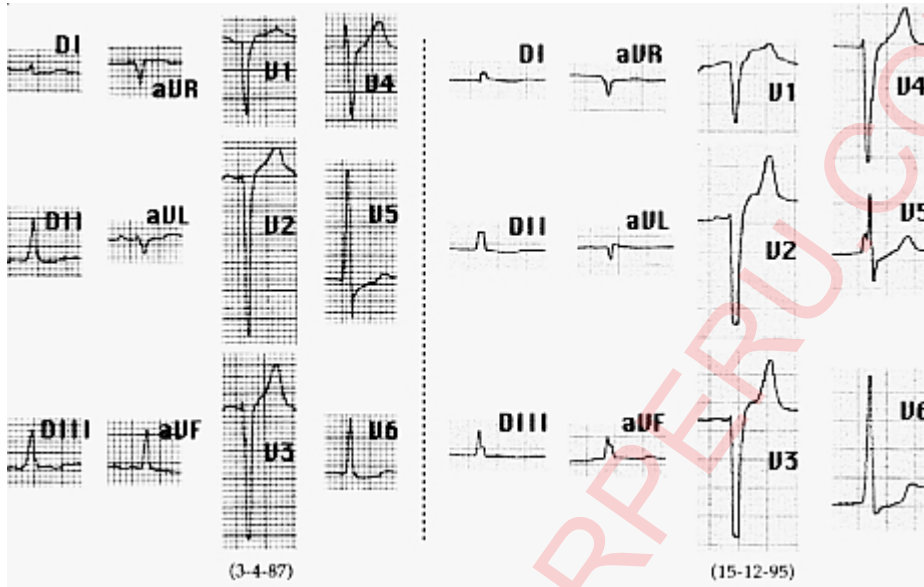
6

5.

(

).

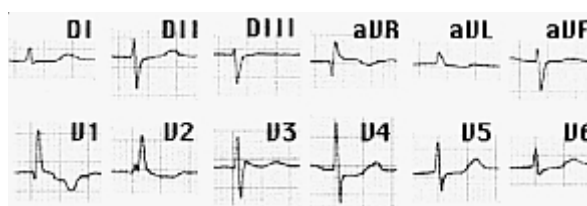
() 0.07 .



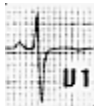
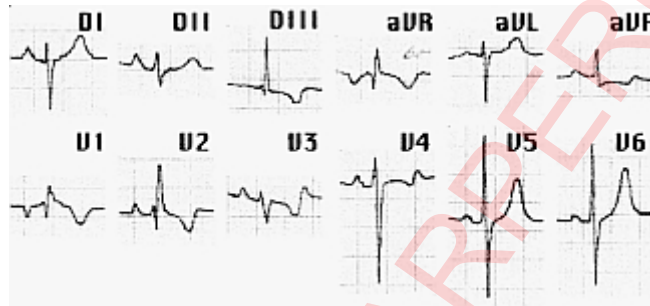
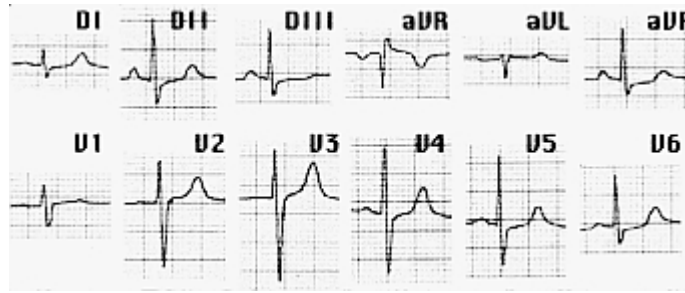
1995

1

(, , ')



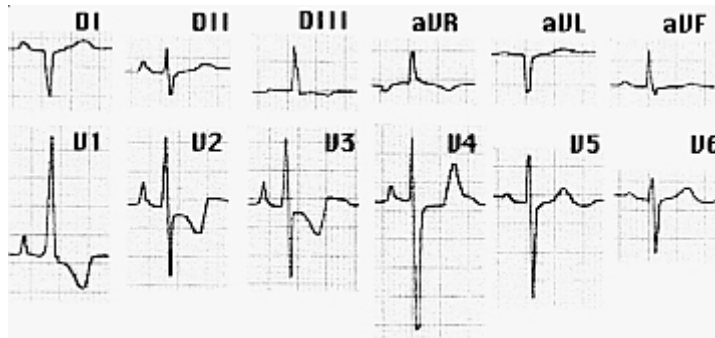
(, ')



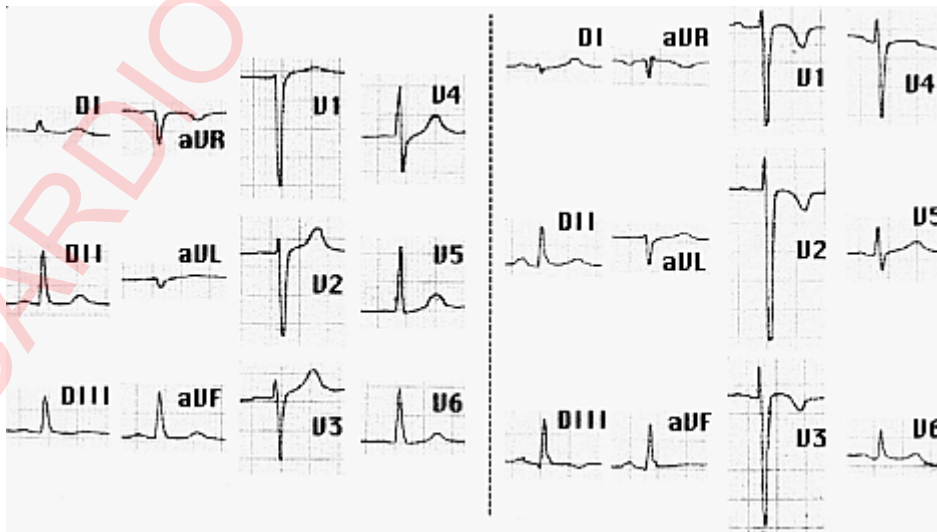
/ 1

1

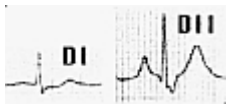
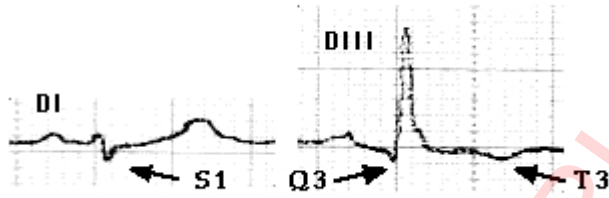
0.5



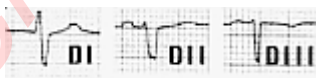
1- 3- 3, ,
26%



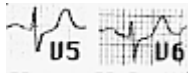
1- 3- 3 (),



+90

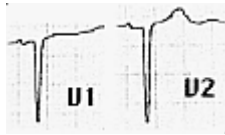


1- 2- 3



5

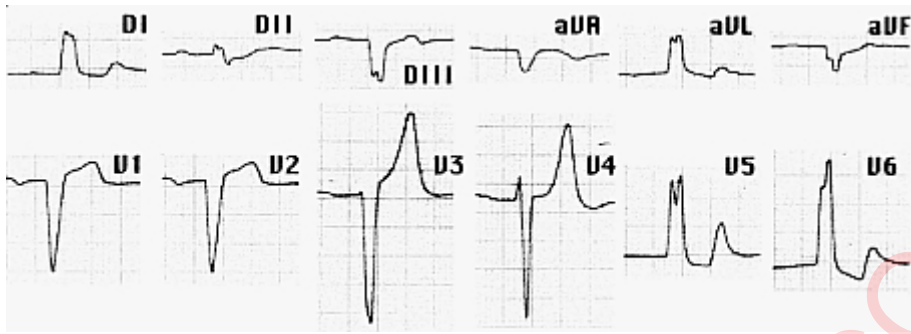
6 (< 0.7).



1 2 ()



0.12 0.18 .



6

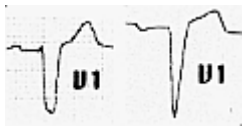
" "

" "

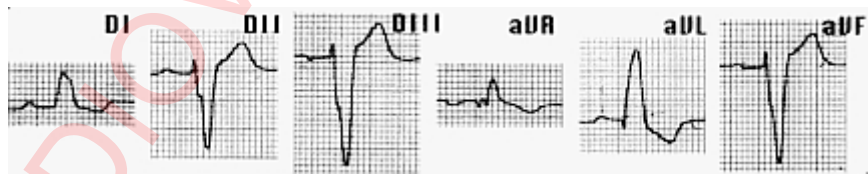
(

, 6,

1, 2 3).



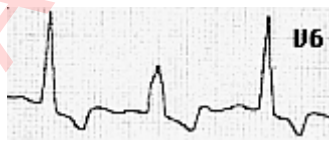
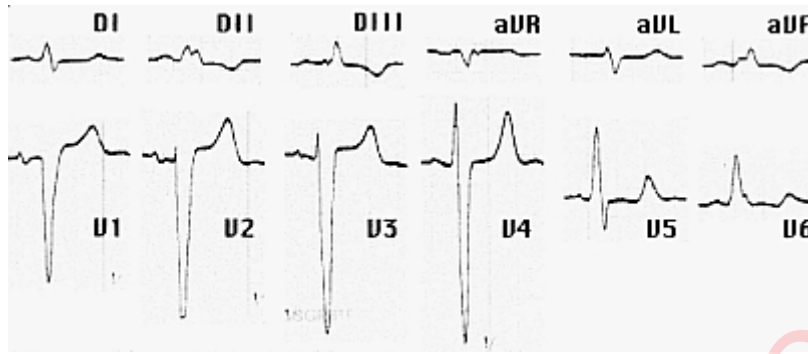
1



+80

+90 ,

CARDIOVASCULARPERU.COM



(2

1 3

)

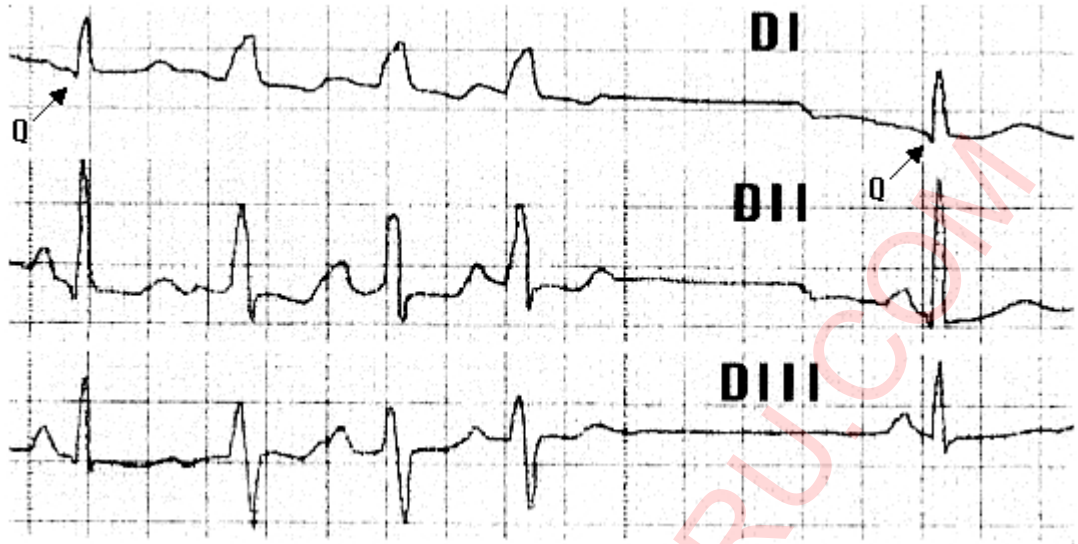
(

)

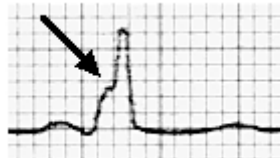
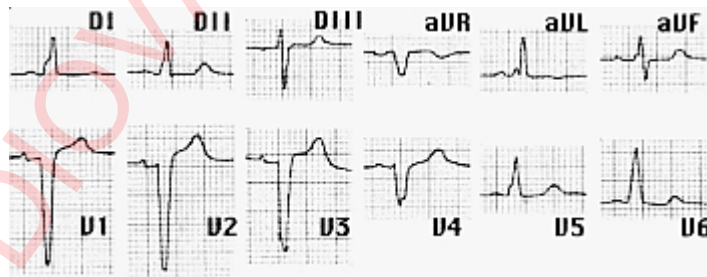
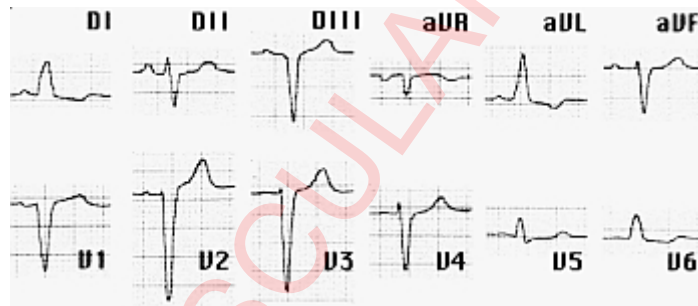
(

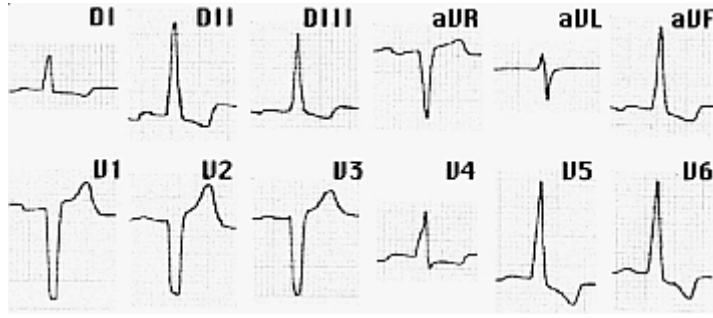
- 3, 4 5

-)



0.10 0.12





1.



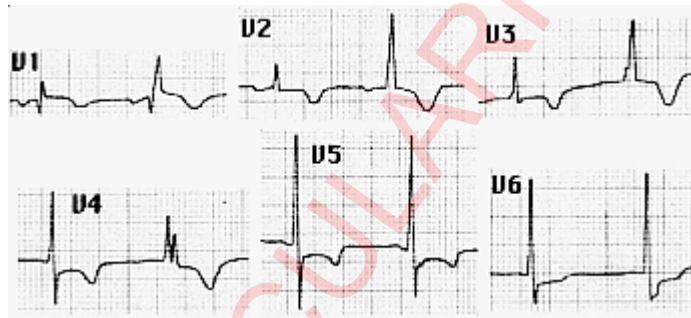
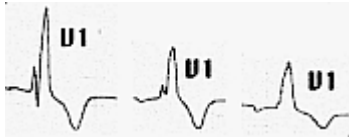
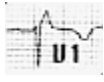
1

6,

1

2.

1



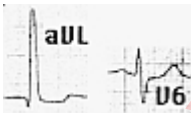
CARDIOVASCULARUPPERU.COM

< 0.12



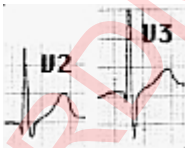
-45 -90

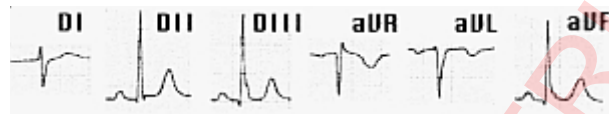
5 6



() 6 <

50





< 0.12

(0.025).

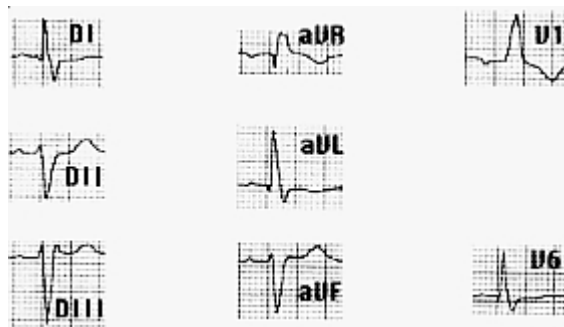
+90

+120

+80

+140

+



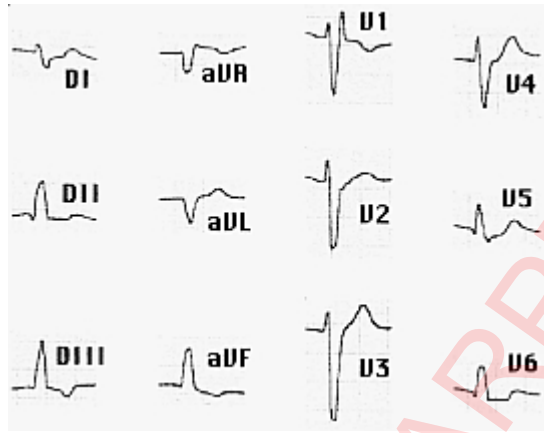
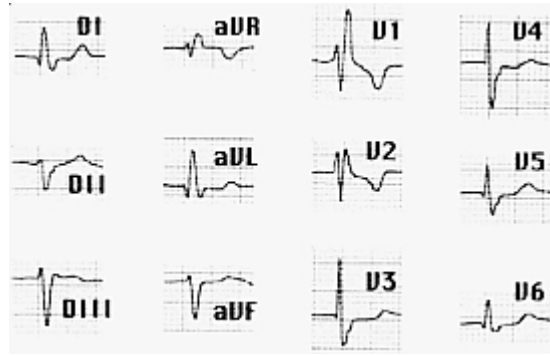
0.08

+



0.08

CARDIOVASCULARPERU.COM



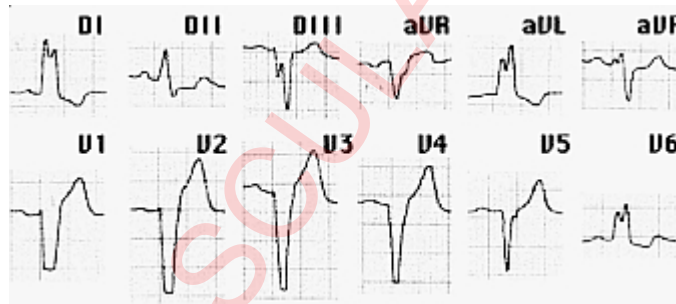
+

+

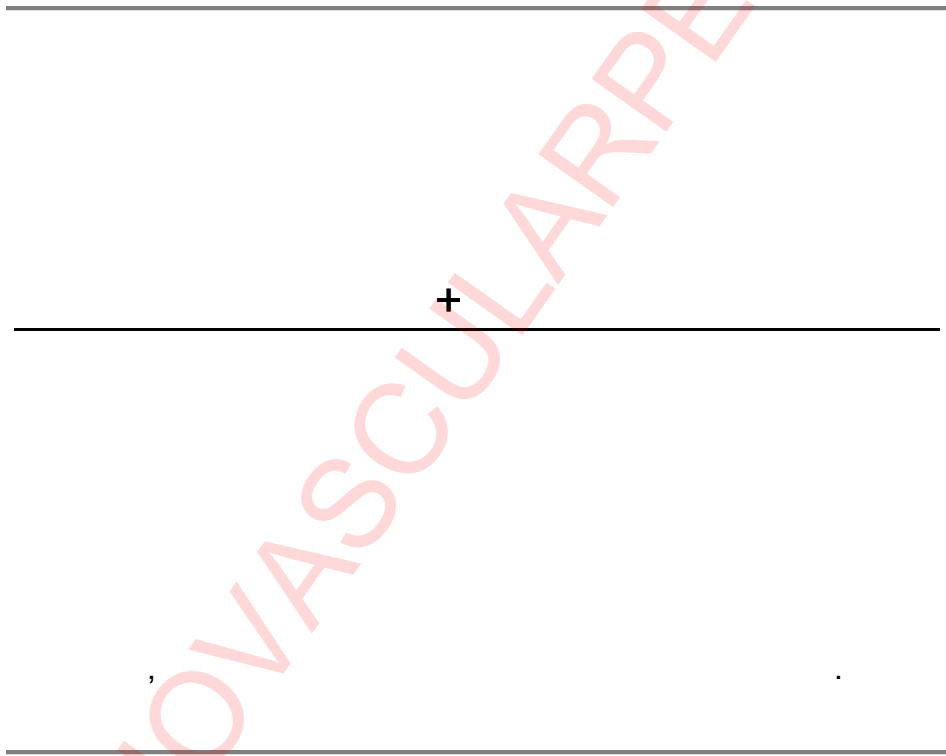
CARDIOVASCULARAPPERU.COM



4-11-96



16-9-97



CARDIOVASCULARPAPERU.COM

+



1.0 1.5

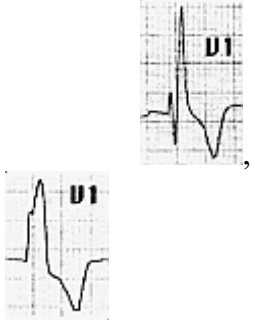
1

1

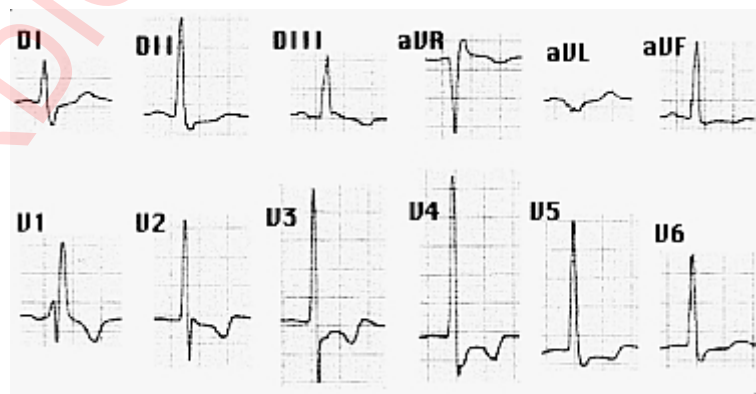


CARDIOVASCULARPERU.COM

19

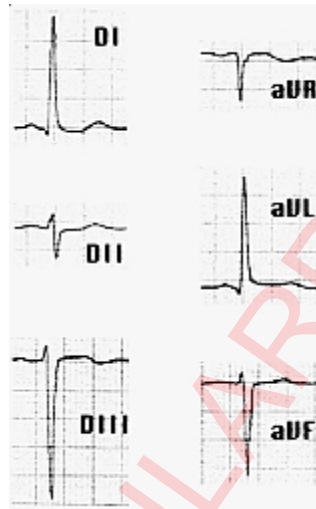


-30
7.5
1 0.04 1
5 20
10
1+ 5-6 35



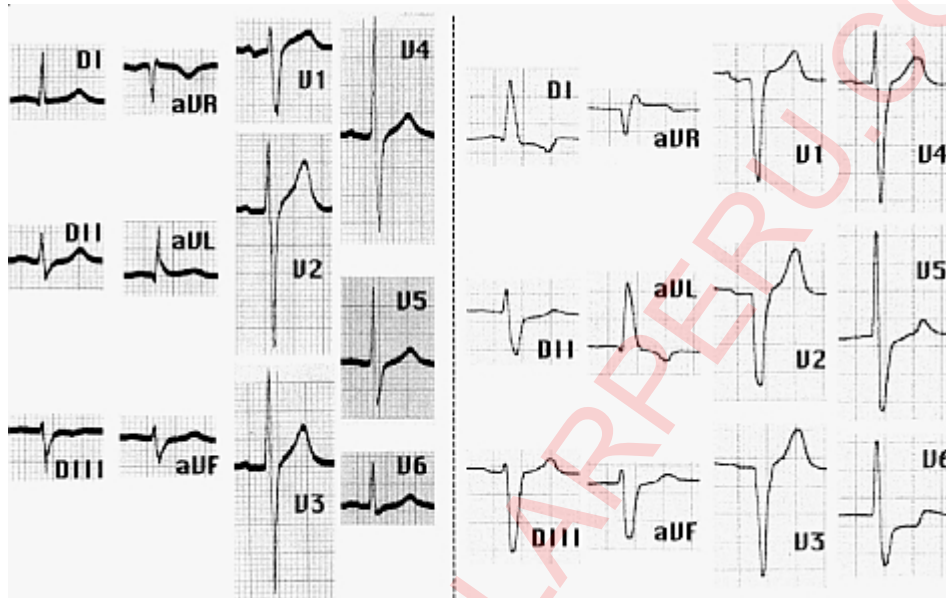
30

+

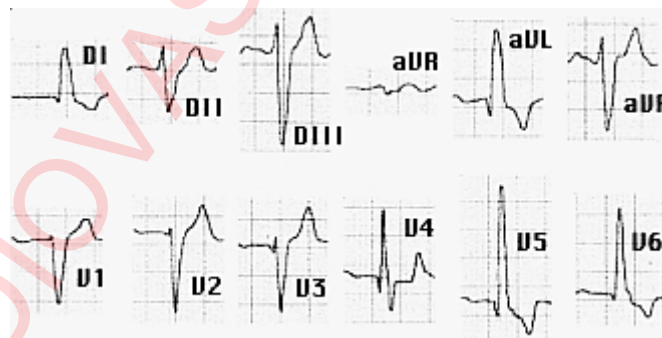


CARDIOVASCULARPERU.COM

(6)



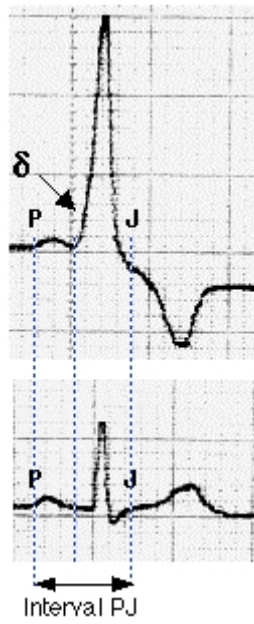
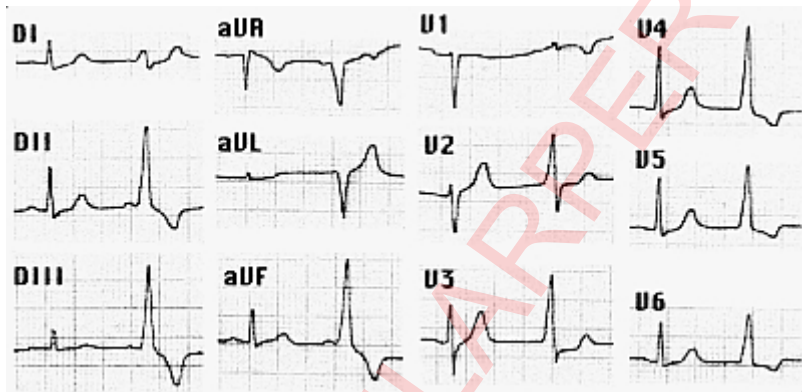
(0,14)



6

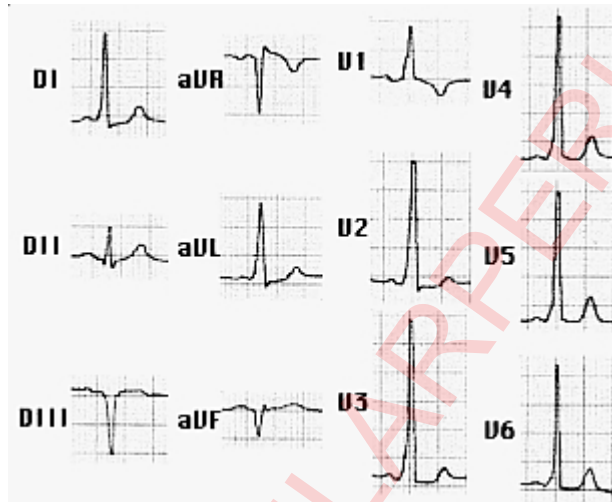
()

(< 0.12),
0.12),



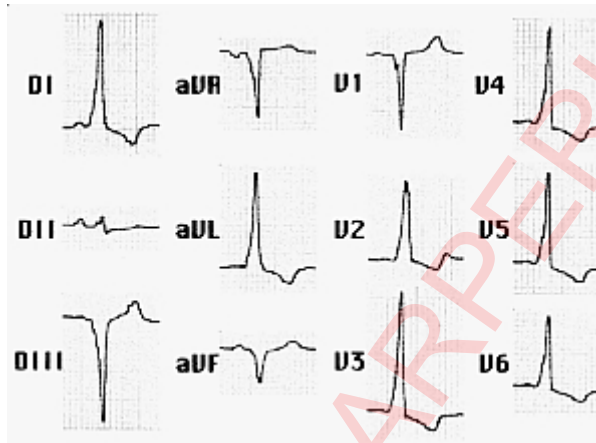
1 2 (

1 6).



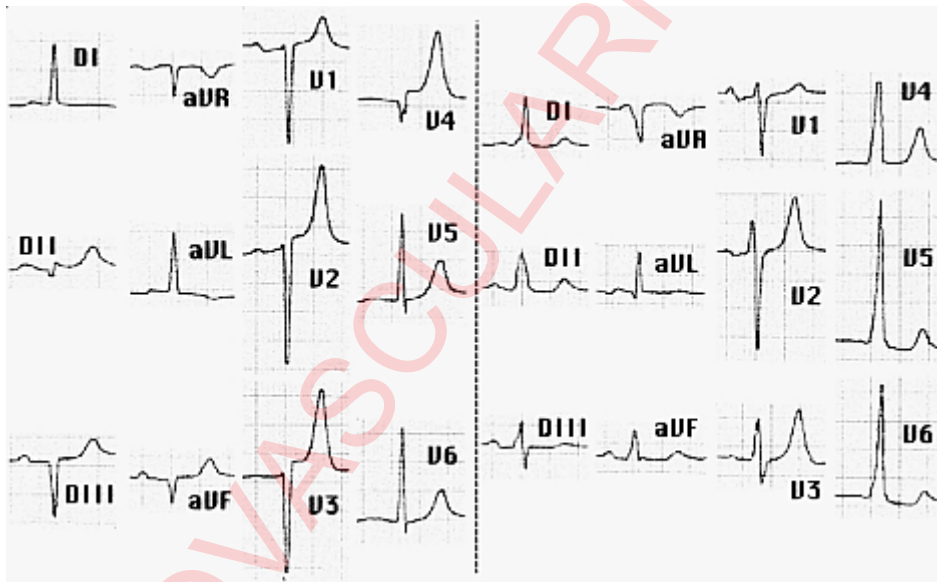
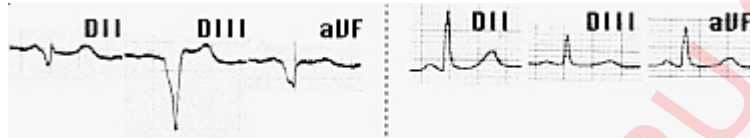
2 5 6).

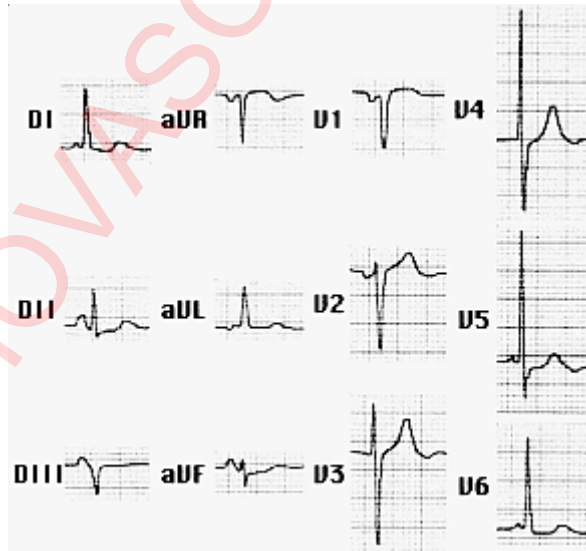
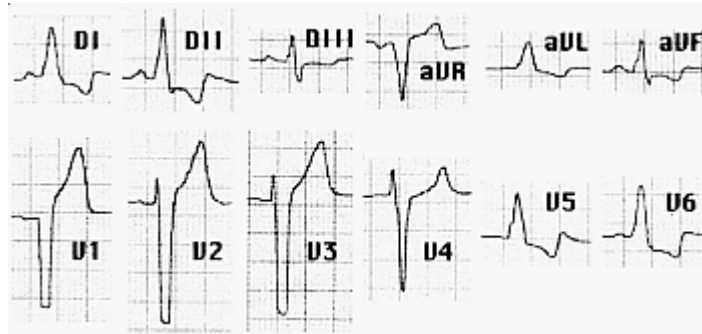
1 2 (1



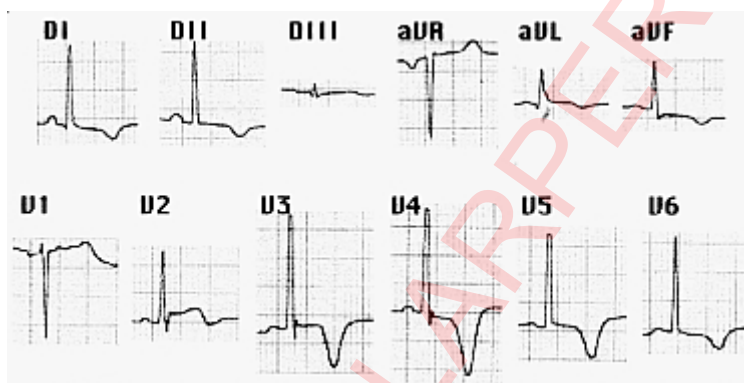
6).

(5

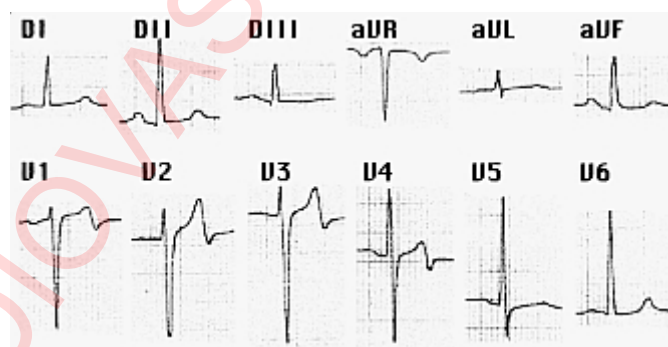




.)



(

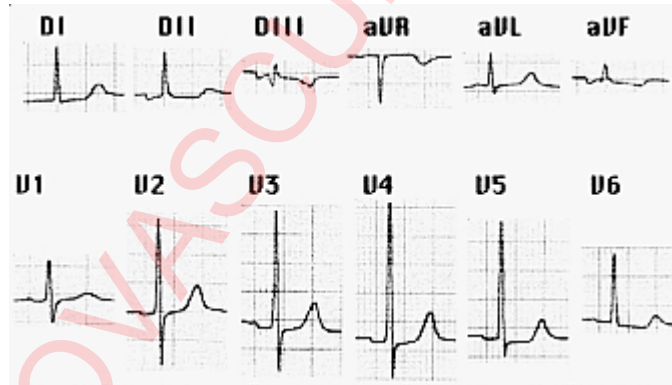


).

(



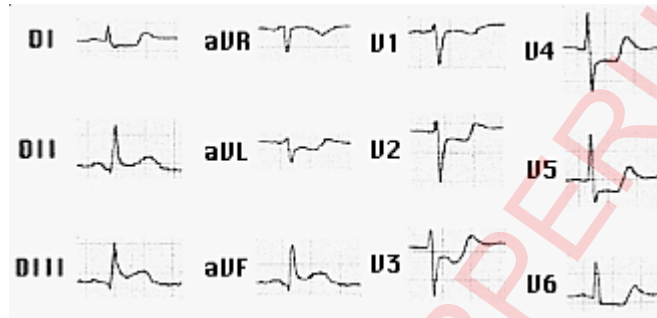
23-5-97



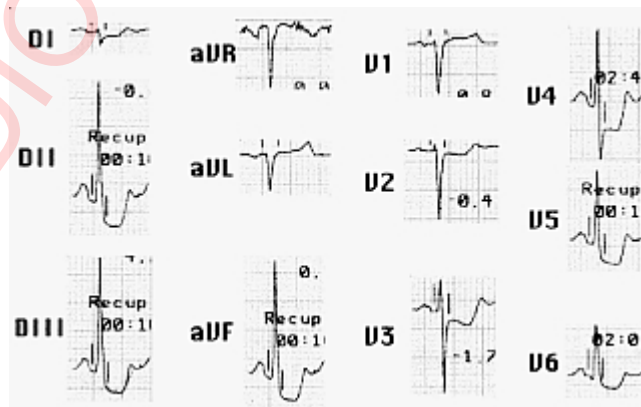
22-10-97 (

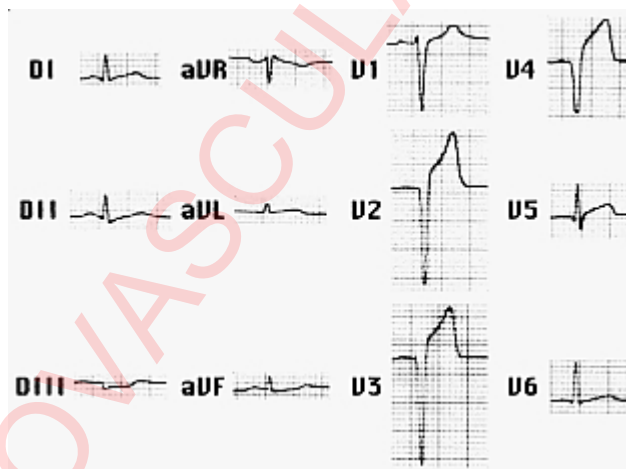
)

(,).

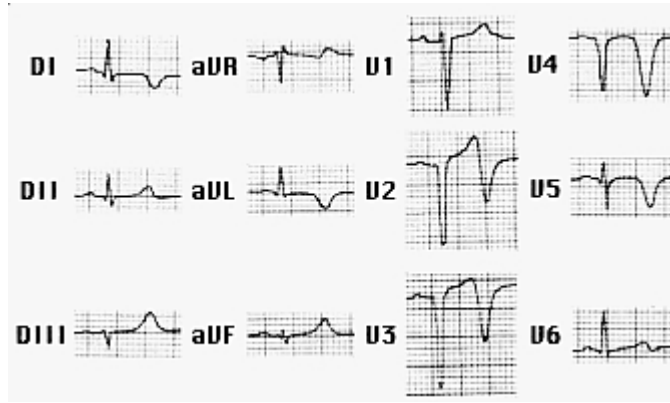


(,).

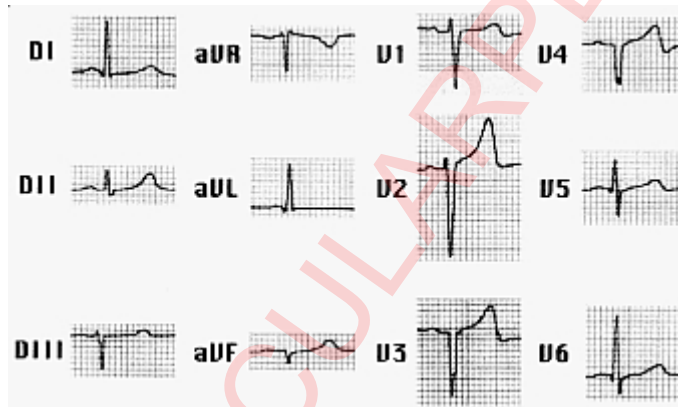




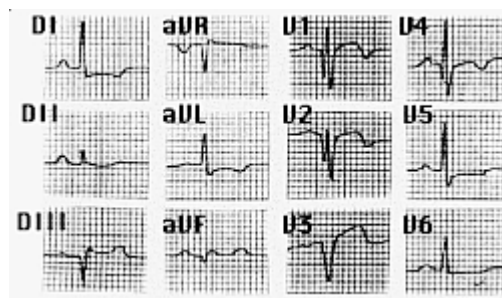
(29-11-88).



(9-1-89).

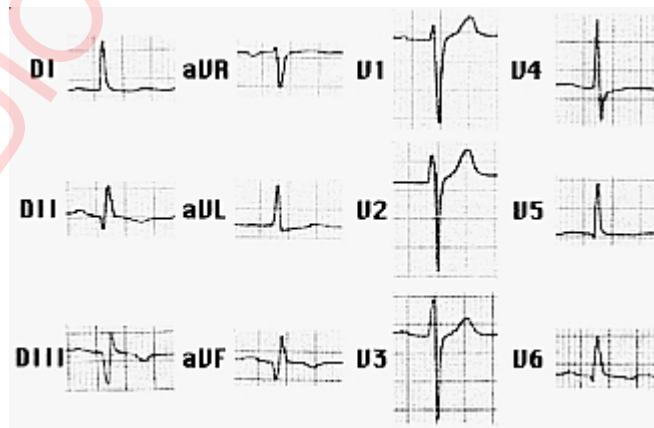
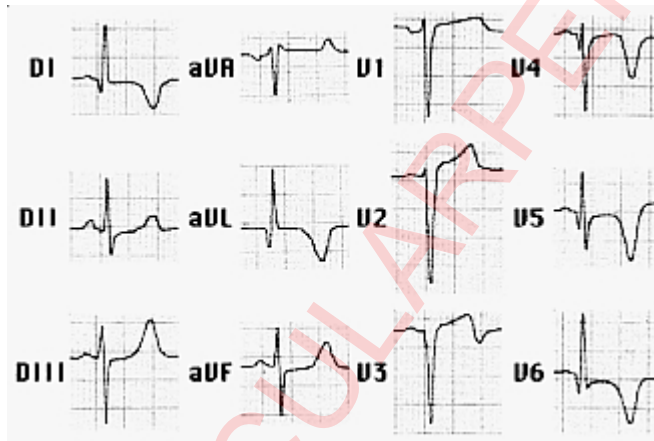
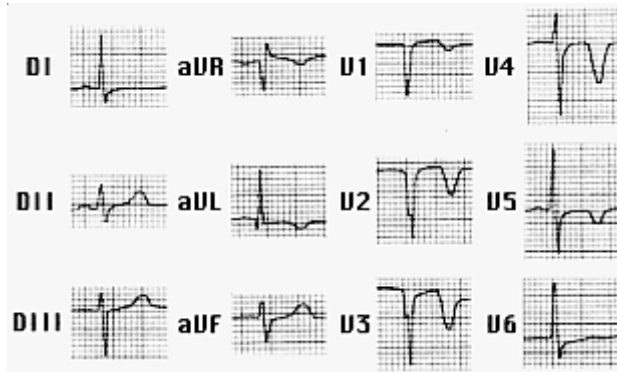


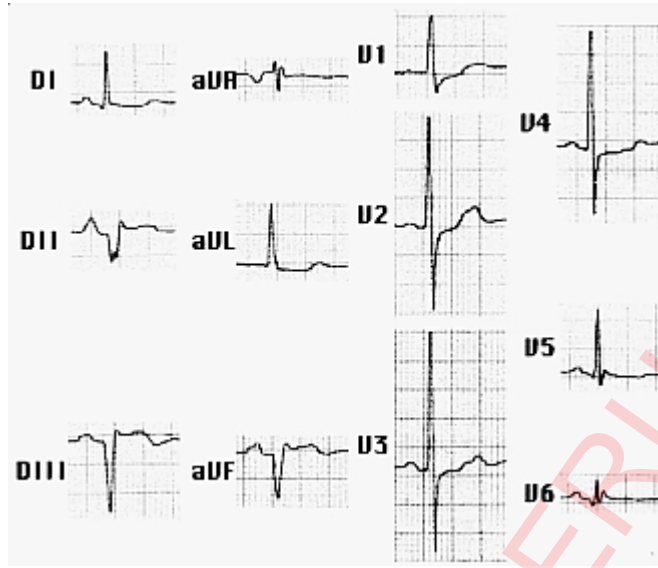
(22-10-91).



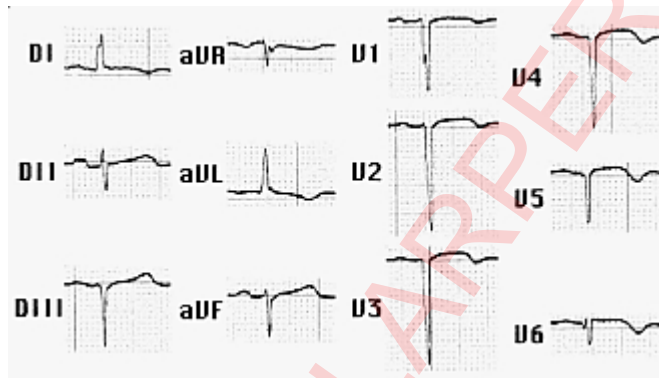
CARDIOVASCULARPPERU.COM

- : 1 2.
- : 3 4.
- : 1 4.
- : , 6.
- :
- : , 3 6.
- :
- :
- : ,
- :
- : 1 4.
- :
- : 1 2.
- : 1 2 , , ,
- : 1 2 , , ,

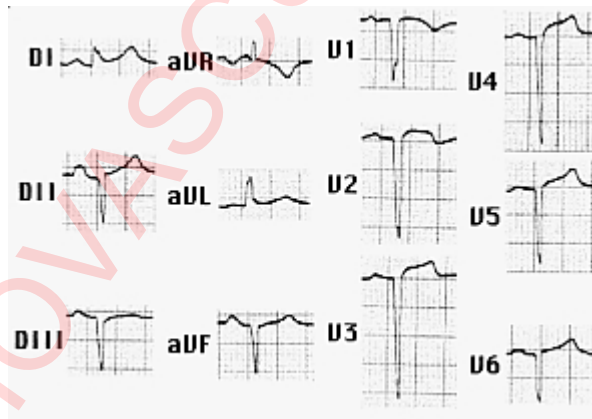




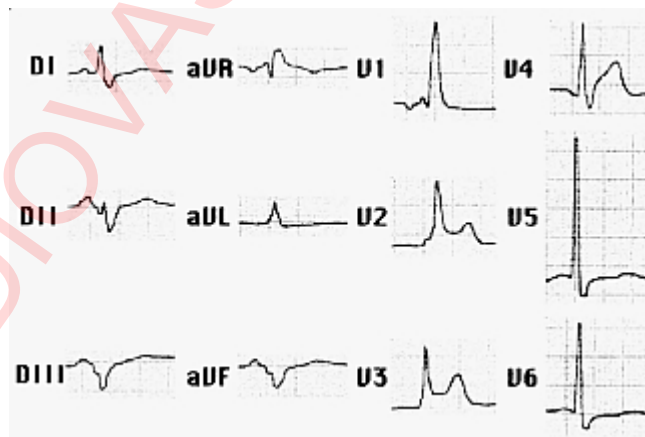
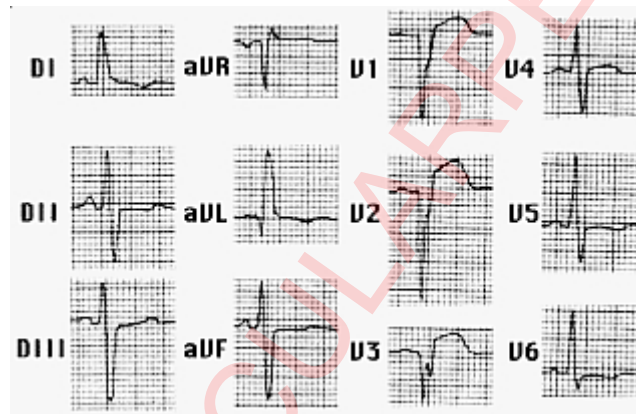
+

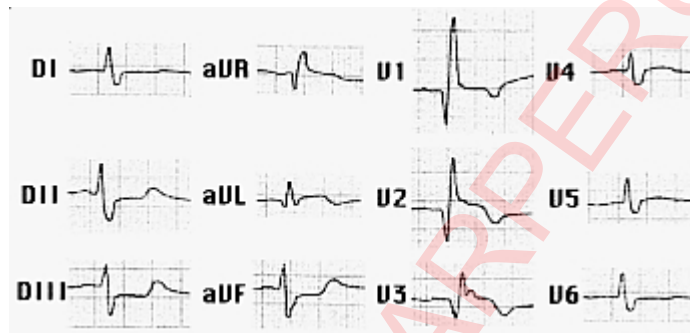


11-10-95.

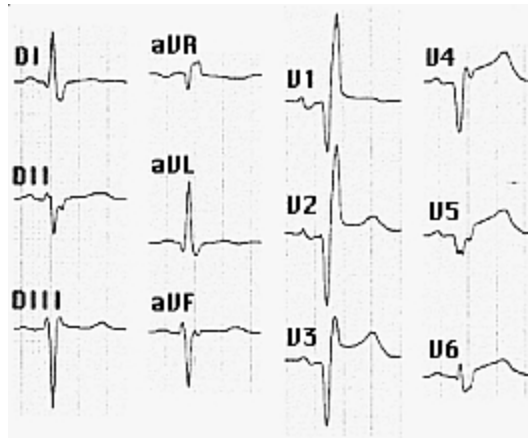


14-9-97.





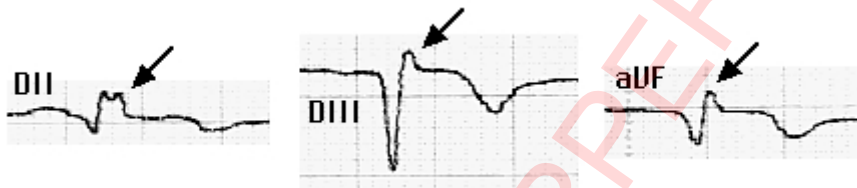
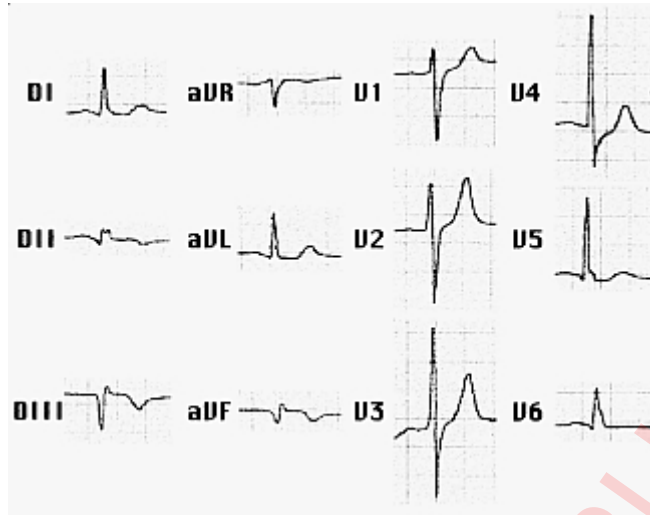
+



CARDIOVASCULARPERU.COM

0.04

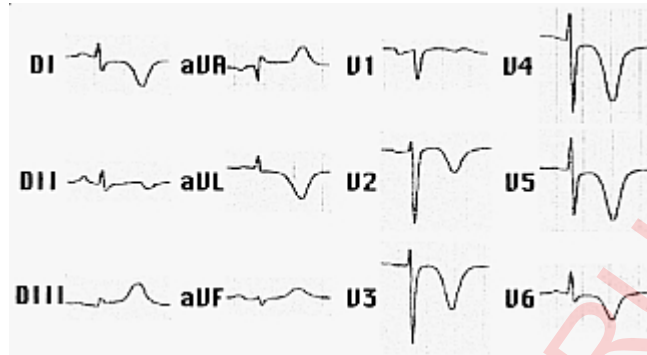
, 5 6-



CARDIOVASCULARPERU.COM

CARDIOVASCULARPPERU.COM

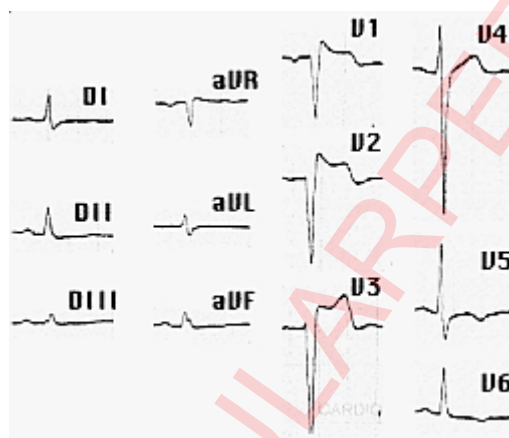
/



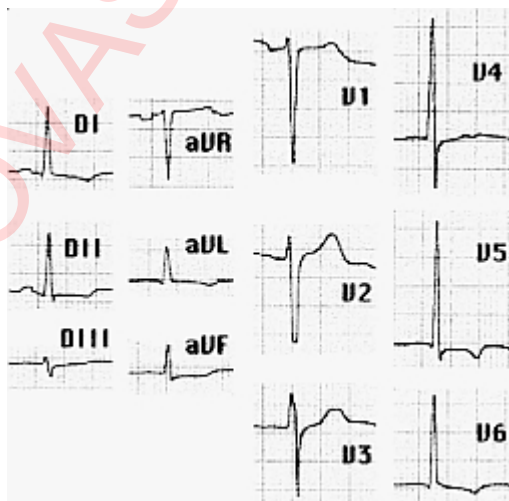
70

()

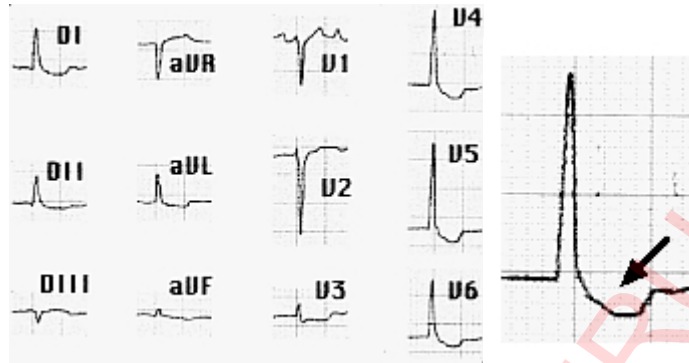
CARDIOVASCULARPERU.COM



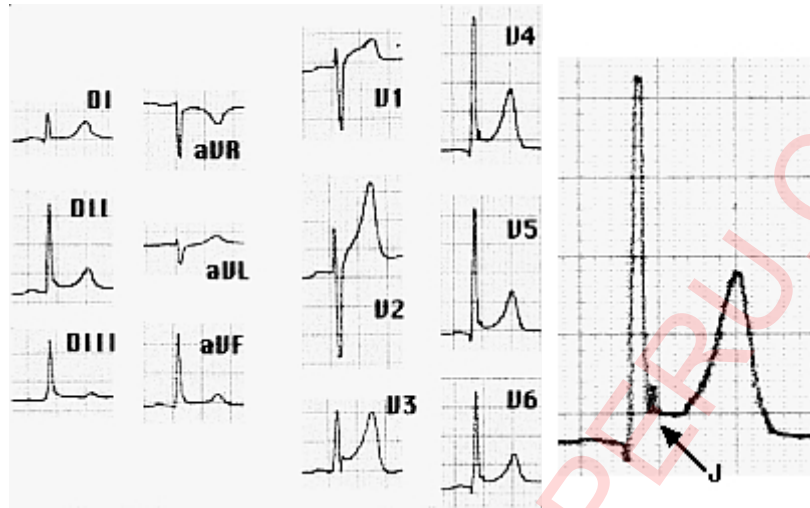
5 6 1 3 (57)



54



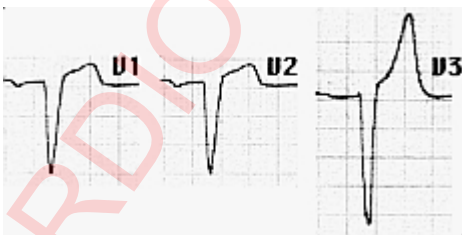
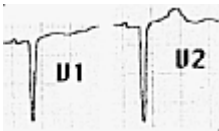
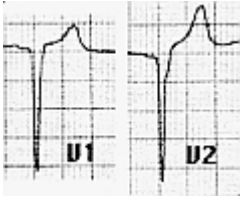
CARDIOVASCULARPERU.COM



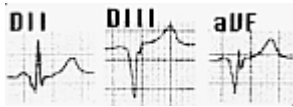
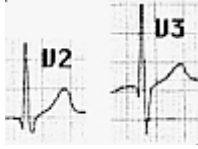
CARDIOVASCULARPERU.COM



1.



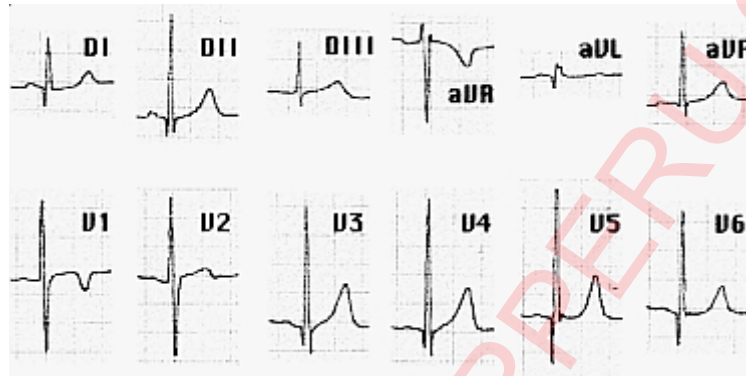
CARDIOVASCULARPERU.COM



CARDIOVASCULARPERU.COM

< 0.04

1 2,



7



35

CARDIOVASCULARPERU.COM